

ARCANA
CERAMICA



BLUES
COLLECTION

THE CEMENT IN ITS PUREST ESSENCE. BLUES COLLECTION UPDATES THE CHARM OF URBAN AESTHETICS WITH A VERY UNIFORM AND HARMONIC DESIGN THAT GIVES CONTINUITY TO SURFACES. TIMELESS AND STYLISH, THE NEW COLLECTION OF CEMENT EFFECT FROM ARCANA TILES IS BASED ON FOUR VERY SOFT NEUTRAL TONES TO INTEGRATE IN THE ENVIRONMENT IN ORDER TO RESPOND TO THE CURRENT DEMANDS IN INTERIOR DESIGN.

PERFECTLY ADAPTABLE TO ALL SURFACES AND SUITABLE FOR INDOOR AND OUTDOOR AREAS, BLUES COLLECTION IS COMPLETED WITH MOSAIC DESIGNS, FABRIC TILES AND ELEGANT RELIEFS WHICH EXTEND THE DECORATIVE POSSIBILITIES OF THIS COLLECTION TO GIVE IT A MORE ORIGINAL TOUCH. LET THE RHYTHMS OF BLUES INVADE YOUR SPACE WITH ITS SENSUAL AND TIMELESS STYLE.

BLUES
COLLECTION



FULSON

PORCELAIN TILE

60X60 CM / 59,3X59,3 CM

59,3X119,3 CM

PAG. 22-25

GILMORE

WALL TILE

33,3X100 CM

PAG. 26-28



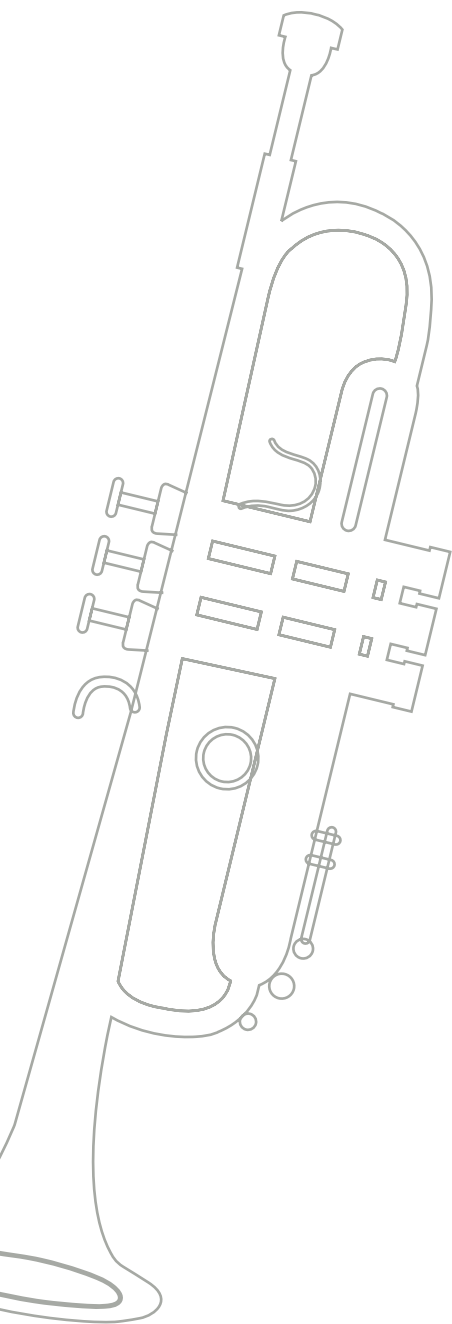
BLUES
COLLECTION



Fulson Sombra - 60 x 60 cm. / Rollins Sombra - 33,3x100 cm.

BLUES

COLLECTION



Walton-SPR Antracita · 59,3x59,3 cm. / Gilmore Gris · 33x100 cm.



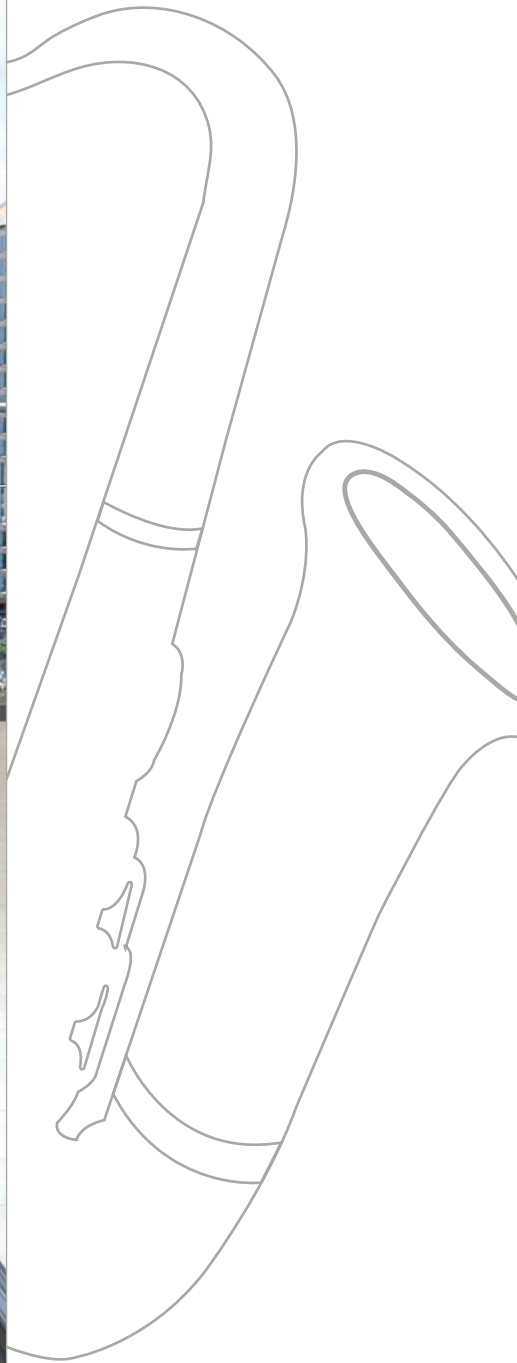
BLUES
COLLECTION

**THE BLUES
MELODY
REFLECTED ON
CEMENT.**



Fulson Antracita / Fulson Gris · 60x60 cm. / Rollins Gris · 33,3x100 cm. / Gradone · 60x60 cm





Fulson-R Sombra · 59,3x119,3 cm. / Carter Mosaic Sombra · 23,7x34,3 cm.
Gilmore Sombra / Rollins Sombra · 33,3x100 cm.



BLUES
COLLECTION

Lewis - SPR Beige · 59,3x59,3 cm.





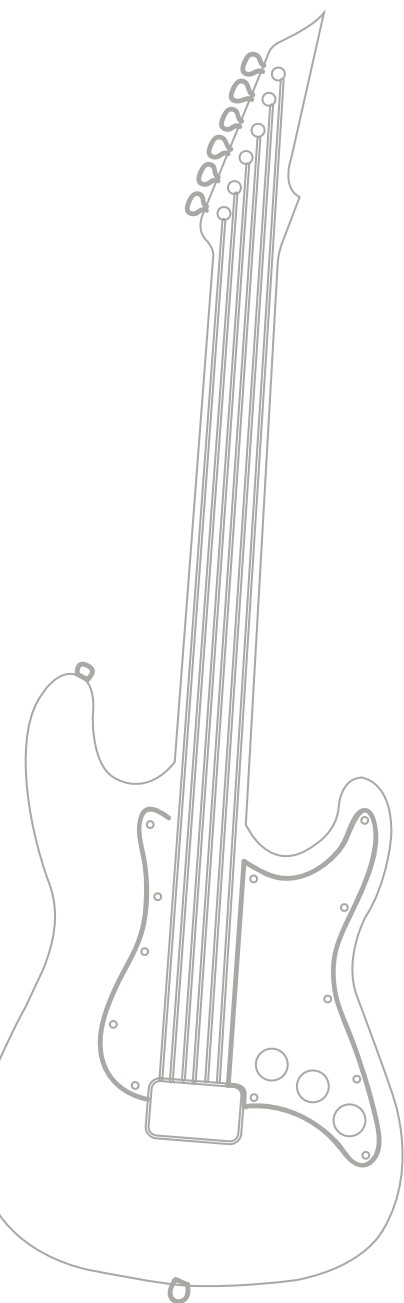
Lewis Gris / Fulson Antracita · 60x60 cm. / Gilmore Gris / Doit Gris · 33,3x100 cm.

**FOR LOVERS OF
METROPOLITAN
STYLE AND
NEUTRAL
COLOURS**

BLUES
COLLECTION

BLUES

COLLECTION



Fulson Sombra / Walton Sombra - 60x60 cm. / Gilmore Sombra / Doit Gris - 33,3x100 cm.



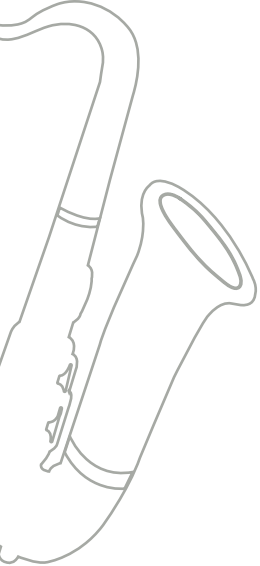


BLUES
COLLECTION

**DELICATE
RHYTHMS TO
RESPOND TO
CONTEMPORARY
TRENDS**



Gilmore Beige / Rollins Beige · 33,3 x 100 cm. / Fulson Beige · 60 x 60 cm.



FULSON

PORCELAIN TILE

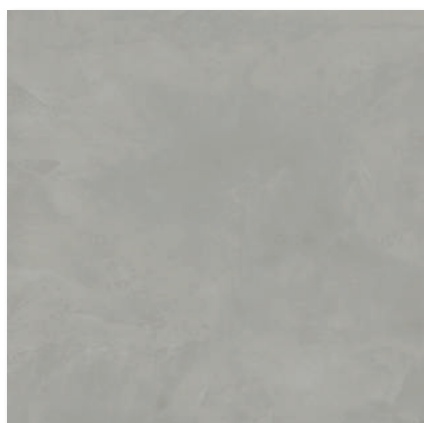
60x60 cm / 23,6"x23,6"
59,3x59,3 cm / 23,3"x23,3"



Fulson Beige
R.016
Fulson-SPR Beige
R.027



Fulson Gris
R.016
Fulson-SPR Gris
R.027



Fulson Sombra
R.016
Fulson-SPR Sombra
R.027



Fulson Antracita
R.016
Fulson-SPR Antracita
R.027



* Carter Mosaic Beige
23,7x34,3 cm approx.
R.343
Carter Mosaic -SPR Beige
23,7x34,3 cm approx.
R.344



* Carter Mosaic Sombra
23,7x34,3 cm approx.
R.343
Carter Mosaic -SPR Sombra
23,7x34,3 cm approx.
R.344



* Carter Mosaic Gris
23,7x34,3 cm approx.
R.343
Carter Mosaic -SPR Gris
23,7x34,3 cm approx.
R.344



* Carter Mosaic Antracita
23,7x34,3 cm approx.
R.343
Carter Mosaic -SPR Antracita
23,7x34,3 cm approx.
R.344



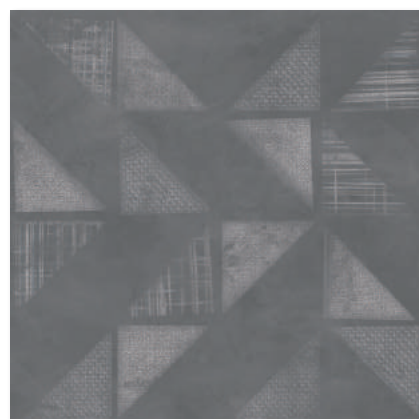
* Lewis Beige
R.019
Lewis-SPR Beige
R.030



* Lewis Gris
R.019
Lewis-SPR Gris
R.030



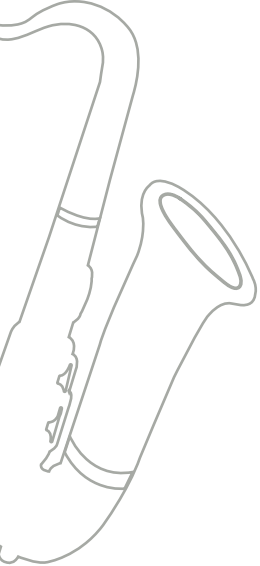
* Walton Sombra
R.019
Walton-SPR Sombra
R.030



* Walton Antracita
R.019
Walton-SPR Antracita
R.030



* This reference is composed by different designs coming in the same box.
Esta referencia está compuesta por diseños diferentes mezclados en la misma caja.
Cette référence est composée de décors différents emballés dans la même boîte.



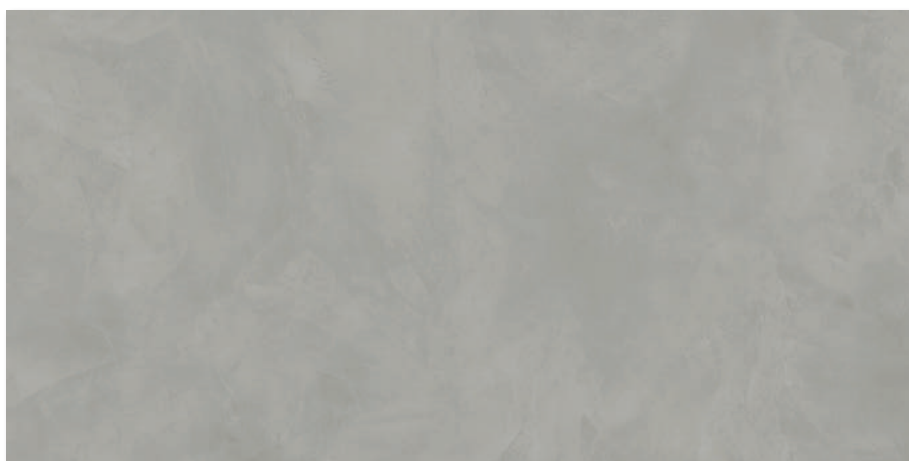
FULSON

PORCELAIN TILE

59,3x119,3 cm / 23,3" x 47,0"



Fulson-R Beige
R.040

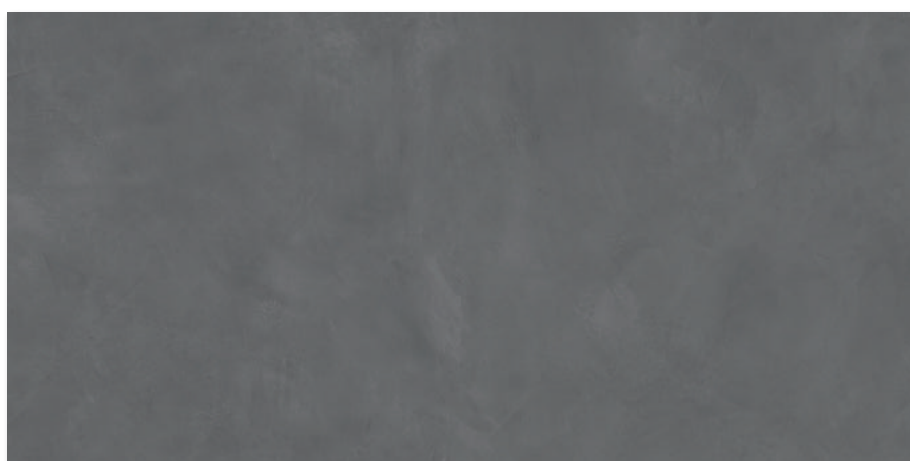


Fulson-R Sombra
R.040



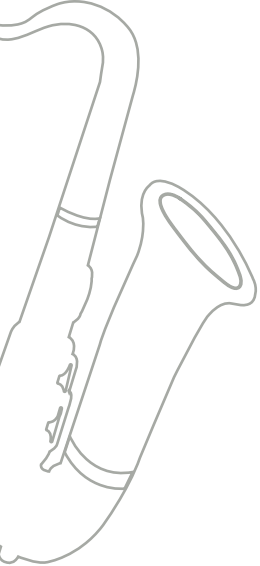


Fulson-R Gris
R.040



Fulson-R Antracita
R.040



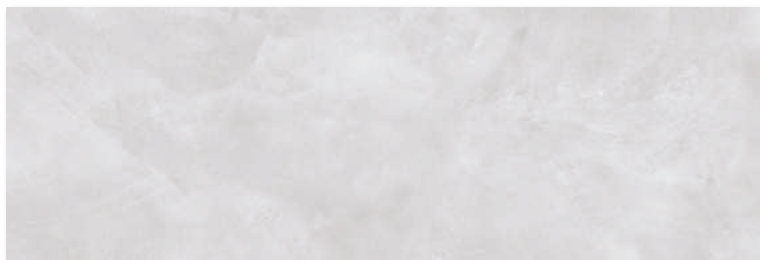


GILMORE

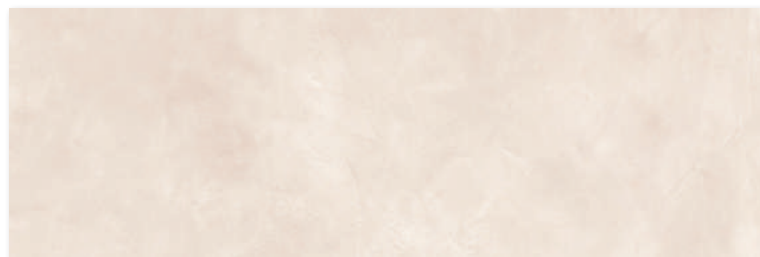
White Body

W A L L T I L E

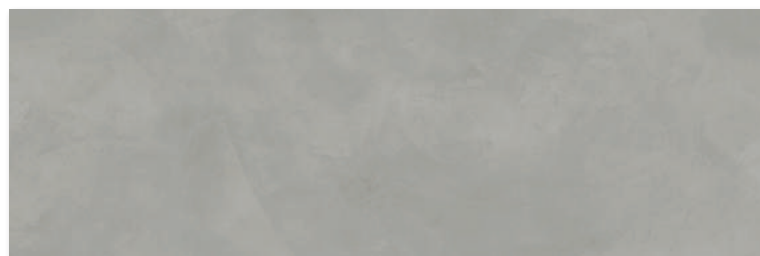
33,3x100 cm / 13,1"x39,4"



Gilmore Gris
R.015



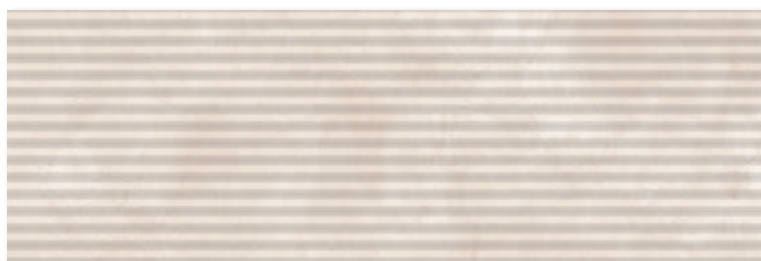
Gilmore Beige
R.015



Gilmore Sombra
R.015



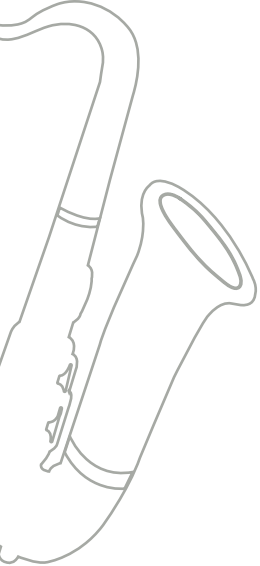
Rollins Gris
R.023



Rollins Beige
R.023



Rollins Sombra
R.023

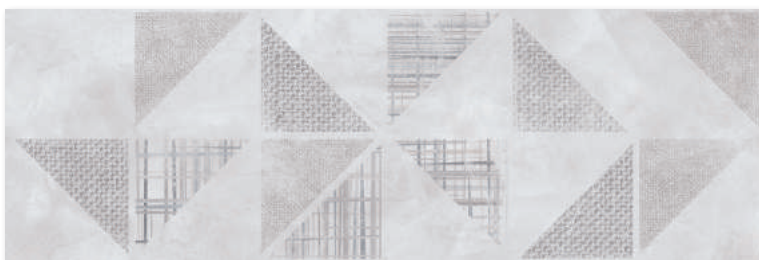


GILMORE

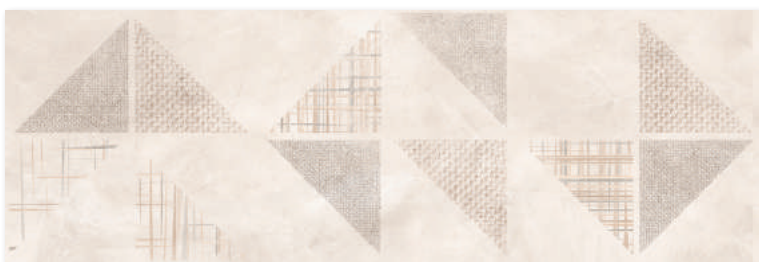
White Body

WALL TILE

33,3x100 cm / 13,1"x39,4"



Doit Gris
R.022



Doit Beige
R.022

Lotus Brillo 0,5 x 100 cm
R.327

Lotus Oro 0,5 x 100 cm
R.324



Grant Gris
R.042





Grant Beige
R.042









Grant Sombra
R.042

PACKING LIST

GILMORE

									
		PIECES / BOX	M² / BOX	ML / BOX	KG / BOX	BOX / PALLET	M² / PALLET	ML / PALLET	KG / PALLET
33,3 x 100 cm / 13,1" x 39,4"		4	1,33	.	25,85	44	58,60	.	1137,74
33,3 x 100 cm / 13,1" x 39,4"	Rollins	4	1,33	.	23,85	44	58,60	.	1049,40

FULSON

										
			PIECES / BOX	M² / BOX	ML / BOX	KG / BOX	BOX / PALLET	M² / PALLET	ML / PALLET	KG / PALLET
BASES	60 x 60 cm / 23,6" x 23,6"		4	1,44	.	33,16	36	51,84	.	1193,76
	59,3 x 59,3 cm / 23,3" x 23,3"		4	1,41	.	32,40	36	50,62	.	1166,40
	59,3 x 119,3 cm / 23,3" x 47,0"		2	1,41	.	37,08	24	33,96	.	890
	23,7 x 34,3 cm / 9,3" x 13,5"	Mosaic	12	0,78	.	17,64	30	23,4	.	529,14
	9,4 x 60 cm / 3,7" x 23,6"	Skirting tile R.321	17	.	10,20	21,47	56	.	571,20	1202,04
	9,4 x 59,3 cm / 3,7" x 23,3"	Skirting tile R.325	17	.	10,08	21,20	56	.	564,48	1187,20
	60 x 60 cm / 23,6" x 23,6"	Staircase step R.348	4	.	2,40	33,16	36	.	86,40	1193,76
	59,3 x 59,3 cm / 23,3" x 23,3"	Staircase step R.350	4	.	2,37	32,40	36	.	85,39	1166,40
	59,3 x 119,3 cm / 23,3" x 47,0"	Staircase step R.355	2	.	2,39	37,08	24	.	57,26	890
	60 x 60 cm / 23,6" x 23,6"	Gradone R.355	2	.	1,20	18,14
	59,3 x 59,3 cm / 23,3" x 23,3"	Gradone R.356	2	.	1,19	17,74
	59,3 x 119,3 cm / 23,3" x 47,0"	Gradone R.358	1	.	1,19	21,60
	60 x 60 cm / 23,6" x 23,6"	Angle gradone	1	.	0,60	9,73
	59,3 x 59,3 cm / 23,3" x 23,3"	Angle gradone	1	.	0,59	9,50
	59,3 x 119,3 cm / 23,3" x 47,0"	Angle Gradone	1	.	1,19	22,32

FIXING AND MAINTENANCE

IMPORTANT NOTE

Technical specifications are only valid for those products classified as first choice. Consequently, any failure to conform to such standards with respect to all other commercial types shall not be considered as grounds for complaint. ARCANIA CERAMICA S.A. does not accept any claim of responsibility for tiles that have not been fixed and/or maintained following the manufacturer's recommendations.

PORCELAIN TILE

Characteristics :

Product with very low water absorption, high mechanical performance, chemical and frost resistance. It is suitable whether for using on interior or exterior floors of residential and commercial buildings. Special pieces normally employed are skirting tile, staircase step and gradone.

FIXING

- Ensure that the size, shade, colour and quality of the material is that of what was expected.
- Mix pieces from several boxes to achieve a uniformed mixture.
- If the material is porcelain, there is no need to submerge the tile in water as there is no absorption.
- The surface to be tiled on must be flat, rigid, absorbent, textured, cohesive, dry and clean of dust and dirt.
- Any additional layers such as water proofing, levellers, sound proofing, under floor heating must be taken into account when choosing the correct adhesive.
- Recommended adhesives for porcelain tiles are those with C1 or C2 (UNE-EN 12004) features with a high adherence, indeformable, and high resistance to water. Adhesives for products with low or zero absorption.
- The adhesives used for wall tiles should be selected according to the substructure and the external environment of where it is being used. Wall tiles that are absorbent can be fixed by all different tile fixing methods.
- We recommend the Thin Layer Method of tile installation. The C1 or C2 adhesive should be spread uniformly with a metal trowel that is suited to the tile size. With the Single Thin Layer Method, adhesive is only applied to the surface of where the tile is to be fixed. With the Double Thin Layer Method, adhesive must be applied to both the rear side of the tile as well as the surface of where the tile is to be fixed. This method is recommended for tiles that are greater than 40x40cm, in areas of high pedestrian traffic, façades, in exteriors and always when fixing porcelain tiles.
- Read and follow the instructions of the adhesive manufacturer with regards to amount of water needed to mix the adhesive and time in which it must be used.
- Use a trowel with uniform teeth.
- Do not fix under any circumstances using the Dot and Dab Method of fixing. It is highly important that a uniform spread of adhesive is used over the entire tile. It is also recommended to use guides or spacers between the tiles (spacers of 1.5mm to 5mm are available on the market) which can be used to facilitate the uniform separation of the tiles.
- Tile fixing or grouting should not be carried out when temperatures are below 5°C and caution has to be followed when temperatures are above 30°C due to the fast drying times of the adhesive.
- Do not walk on floor tiles during the drying time of the adhesive. It is recommended to wait for at least 48-72 hours before walking or applying any weight on the tiles.
- Clean and vacuum the spaces between the tiles before grouting.
- Interlocked laying (maximum 15%)
- Strict observance of the 1.5mm minimum joint between floor tiles is essential, with a wider joint being recommended for medium and large formats, thus allowing absorption of the differential pressure produced in the multi-layer floor/adhesive/tile system.

MAINTENANCE

During fixing:

Once the tiles have been fixed, it will be necessary to provide adequate protection against possible damage during subsequent building work, covering them with cardboard, thick plastic or a layer of sawdust.

Cleaning after fixing:

Residues remaining after work completion can be easily removed with a commercial detergent or an acid-based one, always considering the chemical resistance indicated by the manufacturer.

When using cleaning products the following general considerations should be taken into account:

- Acid cleaning should never be carried out on recently laid floor tiles. The reaction of the acid with the unset cement may damage the joints or deposit insoluble compounds on the surface.
- It is recommended to soak the surface with clean water before using any chemical agent. This prevents the grouts from absorbing these agents. Clean the surface with water immediately after the treatment to remove any remain of the chemical products.
- Trowels and abrasive scourers must not be used. The use of sponges is strongly recommended, especially natural ones.
- The fixing by a professional tiler is highly recommended for getting the best performance.

Routine care:

Daily cleaning of stoneware tiles is particularly simple, it only requires clean water to which an alkaline base cleaner may be added.

The use of waxes, oils or similar products is not recommended since the non-porous glazed surface prevents from a correct application.

It may occasionally occur that stains cannot be fully removed with a commercial detergent, making necessary to use solvents or specific cleaning agents. It is recommended to firstly check the chemical resistance of the tile and, as an extra precaution, test in a clean, spare tile or in non-visible area.

Important:

Hand-painted ceramic wall tiles or complementary pieces on third and fourth firing must be treated with extreme care during both the fixing and subsequent cleaning, as well as during ordinary routine cleaning. The use of pure or diluted acids, detergents or other corrosive products will seriously harm their original look.

THICKNESS

GILMORE

BIII Annex L

MONOCOCCIÓN
33,3x100 cm. / 13,1"x39,4"
11

FULSON

Bla Annex G

MONOCOCCIÓN		
60x60 cm. / 23,6"x23,6"	59,3x59,3 cm. / 23,3"x23,3"	59,3x119,3 cm / 23,3" x 47,0"
10	11	

TECHNICAL DATA

Technical Characteristics Características técnicas	Bla anexo G	BIII anexo L	Reference standard Norma de referencia
Manufacture process Proceso de fabricación	Single-firing Monococción		Dry pressed ceramic tile Baldosa cerámica prensada en seco
Length, width, thickness, side straightness, orthogonality, flatness. Longitud, anchura, espesor, rectitud de los lados, ortogonalidad, planitud.	Conforms to the requisites applicable to each model as defined in standard UNE-EN 14411 Cumple con los requisitos aplicables a cada modelo definidos en la norma UNE-EN 14411		UNE EN ISO 10545 Part 2 / Parte 2
Water absorption Absorción de agua	E < 0,5 %	E > 10 %	UNE EN ISO 10545 Part 3 / Parte 3
Flexion resistance N/sq. mm. and breaking strength Resistencia a la flexión (N/mm.2) y fuerza de rotura (N)	> 35 > 1300	> 15 > 600	UNE EN ISO 10545 Part 4 / Parte 4
Resistance to surface abrasion (Glazed tiles) Resistencia a la abrasión superficial (Baldosas esmaltadas)	Please check for each item A consultar según modelo.	•	UNE EN ISO 10545 Part 7 / Parte 7
Slip resistance Resistencia al deslizamiento	Please check for each item A consultar según modelo.	•	UNE ENV 12633:2003
Lineal thermic dilatation Dilatación térmica lineal	< 9*10⁻⁶/° C	< 7*10⁻⁶/° C	UNE EN ISO 10545 Part 8 / Parte 8
Thermic impact resistance Resistencia al choque térmico	It stands the test Resiste la prueba		UNE EN ISO 10545 Part 9 / Parte 9
Expansion due to moisture Expansión por humedad	•	< 0,6 %	UNE EN ISO 10545 Part 10 / Parte 10
Cracking resistance Resistencia al cuarteo	It stands the test Resiste la prueba		UNE EN ISO 10545 Part 11 / Parte 11
Frost resistance Resistencia a la helada	It stands the test Resiste la prueba	•	UNE EN ISO 10545 Part 12 / Parte 12
Chemical resistance Resistencia química <ul style="list-style-type: none"> Domestic cleaning products Productos de limpieza doméstica Swimming pool salt Sales para piscina Acids and bases (low concentration) Acidos y bases (baja concentración) 	Type GA Clase GA Type GA Clase GA Minimum Type GLB Mínimo Clase GLB		UNE EN ISO 10545 Part 13 / Parte 13
Stains resistance Resistencia a las manchas	Minimum Type 4 Mínimo Clase 4		UNE EN ISO 10545 Part 14 / Parte 14

ARCANA CERAMICA S.A.

RESERVES THE RIGHT TO DELETE AND AMEND, EITHER TOTALLY
OR PARTIALLY, ANY OF THE STYLES, COLOURS, SHADE, SIZES,
REFERENCES AND OTHER TECHNICAL SPECIFICATIONS CONTAINED IN
THIS CATALOGUE WITHOUT PRIOR NOTICE.

THE TOTAL OR PARTIAL REPRODUCTION OF THIS CATALOGUE WITHOUT
PRIOR WRITTEN AUTHORIZATION FROM ARCANA CERAMICA, S.A. IS
STRICTLY PROHIBITED.

THE COLOURS SHOWN IN THIS CATALOGUE ARE FOR GUIDANCE ONLY.

www.arcanatiles.com