



**QUTONE CERAMIC PVT. LTD.**  
(OFFICES & SHOWROOMS)

**CORPORATE:**

**Ahmedabad**  
11, Titanium, Corporate Road,  
Opp. Prahalad Nagar Garden,  
Satellite, Ahmedabad-380015  
Gujarat, INDIA  
Tel.: +91 79 40300075

**OVERSEAS:**

**Italy**  
Via Regina Pacis,  
No. 32, 1st Floor,  
Sassuolo (MO), 41049, Italy.  
Tel.: +39 05 36805993

**REGIONAL**  
**Delhi, NCR**

Plot No.117, Sector 44,  
Gurgaon-122003,  
Haryana.  
Tel.: +91 124 4223770

**Mumbai**

2<sup>nd</sup> Floor, Chedda Arcade,  
Khira Nagar, S V Road,  
Santacruz (West),  
Mumbai-400054. Maharashtra

**Bangalore**

Casa Qutone, #41, St. John's Church Road,  
1<sup>st</sup> Floor, Above GIRIAS, Opp. Coles Park,  
Shivajinagar, Bengaluru-560051. Karnataka  
Cell: +91 80409 22655

**Chandigarh**

Plot Number 1619 (JLPL),  
Industrial Area, Sector 82, Airport Road,  
Mohali-SAS Nagar, Mohal-160055. Punjab  
Cell: +91 99150 40096

**Jaipur**

Plot no. 8, 2<sup>nd</sup> Floor, Rajeev Vihar,  
Opp. Metro Pillar No. 30,  
Near Mansorver Metro Station,  
Jaipur-302020. Rajasthan

**Chennai**

41/158, North Usman Road,  
T.nagar, Chennai-600017.  
Cell: +91 99090 42354

**Hyderabad**

Flat No.G2, 1-20-268, Survey No.72,  
Kaizen Mirza White House, Nr. Begumpet,  
Rasoolpura, Secunderabad-500003.  
Telangana

**Cochin**

288 J, M.R, Arcade, Pathadipalam,  
Metro Pillar No: 333, South Kalamaserry,  
Cochin-682033. Kerala  
Cell: +91 98460 96516

**Pune**

259, Shaniwar Peth,  
Vishnukrupa Hall Building  
Pune - 411030  
Maharashtra

**Kolkata**

PS Pace, Room No. 506,  
5th Floor, 1/1A Mahendhra Roy Lane,  
Above Nissan Car Showroom,  
Topsia Road, Kolkata-700046.  
Cell: +91 99090 42363

**For Sales Enquiry:**

**NORTH ZONE:** Delhi-Haryana-UP-UK: +91 85888 45117 | CHD-PB-J&K-HP: +91 99150 40096 | Rajasthan: +91 95493 27860

**SOUTH ZONE:** AP: +91 76809 06394 | Kerala: +91 81389 98991 | Karnataka: +91 88844 85020 | TN-Pondicherry: +91 89398 90701

**WEST ZONE:** Mumbai-GOA: +91 99090 42399 | GUJARAT: +91 75748 19814 | MP-ROM: +91 77188 56710

**EAST ZONE:** WB-Orissa-Bihar: +91 99090 42395 | CG: +91 95222 69201 | Assam-NorthEast: +91 99090 42397 | Jharkhand: +91-70700 93119, +91 72800 02737

# CATALOGUE GENERAL 2018

**imarble**  
INCREDIBLY ITALIAN

1200x2400 mm | 1200x1200 mm  
800x2400 mm | 800x1200 mm | 800x1600 mm

# ASPIRE LUXURY. WE CRAFT IT.

The dream project of like-minded visionaries that started in 2008, it continues to push the envelope on tile capabilities. Qutone was embraced by patrons, architect fraternity, associates and clients alike, which assisted the company to grow rapidly. Qutone has set itself apart from the league and it has emerged as the most innovative and trendsetting brand in the ceramic tiles world. Today, Qutone Ceramic is a global hi-tech manufacturer of premium ceramics lifestyle solutions. The inspiration behind every product of Qutone is the customer's rapidly growing appetite for style and aesthetics. Qutone's emphasis on quality and innovative designs ensures superlative customers satisfaction.

**LUXURY  
TILES**

**imarble**  
INCREDIBLY ITALIAN

**OUR COLLECTION**

600x1200mm

195x1200mm

1200x1200mm

800x1200mm

195x1600mm

800x1600mm

1200x1800mm

800x2400mm

1200x2400mm

1200x3000mm - 6mm

1200x3600mm - 6mm

World's  
Largest Slab





# FEATURES



## Installation Friendly

What makes the iMarble intelligent are the grand sizes it is available in. This makes installation a very simple task. For example, one single slab of 1200x 2400mm will replace 8 tiles of standard 600x 600mm size.

## Pre-Polished

Polishing natural marble is a hard task since one has to find a mason to buff the surface of the marble. However, iMarble's processed body is highly polished and retains it for years.



## Light Weight

The iMarble weighs at least 60% less than traditional and current Italian marble. This adds to the simplicity of installation and transport of the slabs.

## Resin-Free

Resin is a synthetic polymer used as an adhesive for treating cracks in natural marble. iMarble uses no resin treatment as there are no cracks in it. Since resin has an adverse effect on the skin, iMarble is a far more better and healthier option than natural marble.



## Compact Body/ High MOR

Natural marble has a very low modulus of rupture (MOR), while processed slabs of iMarble are compact made and have a very high breakage strength, making iMarble a far more stronger choice than traditional marble.

## Zero Maintenance

Even when used in high-traffic areas, iMarble needs minimum care because of its low porosity, highly compact body and high hardness index.



## Facades

Apart from just flooring, iMarble can be used in many other applications like facades, lifts, ventilated and non-ventilated facades. iMarble can be installed easily by means of wet/dry cladding.

## Zero Porosity Ensuring Anti-Fungal Life

Another quality that iMarble is imbued with is its low or zero porosity. When water settles on natural marble, it seeps in, making the marble weak, inviting fungal, algae growth, etc. With iMarble, all these problems can be avoided.



# I N D E X







HOMES



SHOPPING  
MALLS



THEATERS /  
HALLS



HOSPITALS



AIRPORT  
TERMINALS



CORRIDORS /  
HALLS



SCHOOLS



INDUSTRIES



CAFÉ, PUBS  
& BARS



OFFICES



SUPER  
MARKETS



BANKS

## TECHNICAL FEATURES



STAIN  
RESISTANT



SCRATCH  
RESISTANT



HIGH ABRASION  
RESISTANT



ZERO  
MAINTENANCE



ALMOST 0% WATER  
ABSORPTION



THERMAL  
RESISTANT



11 MM  
THICKNESS



HIGH FLEXURAL  
STRENGTH



FOR WALL  
& FLOOR



EASY  
INSTALLATION



EASY TO  
CLEAN



FIRE  
RESISTANT



CHEMICAL  
RESISTANT

## APPLICATION AREAS



HOMES



THEATRES / HALLS



OFFICES



SUPER MARKETS



HOSPITALS



RELIGIOUS PLACES



SCHOOLS



RESTAURANT



INDUSTRIES



SHOPPING MALLS



CORRIDORS / HALLS



BANK



CAFÉ, PUBS & BARS



AIRPORT TERMINALS



LIVE IN THE COMPANY  
OF **NATURAL** VIGOR

1200x2400mm







Rosso Crema

Polished



French Grey

Polished

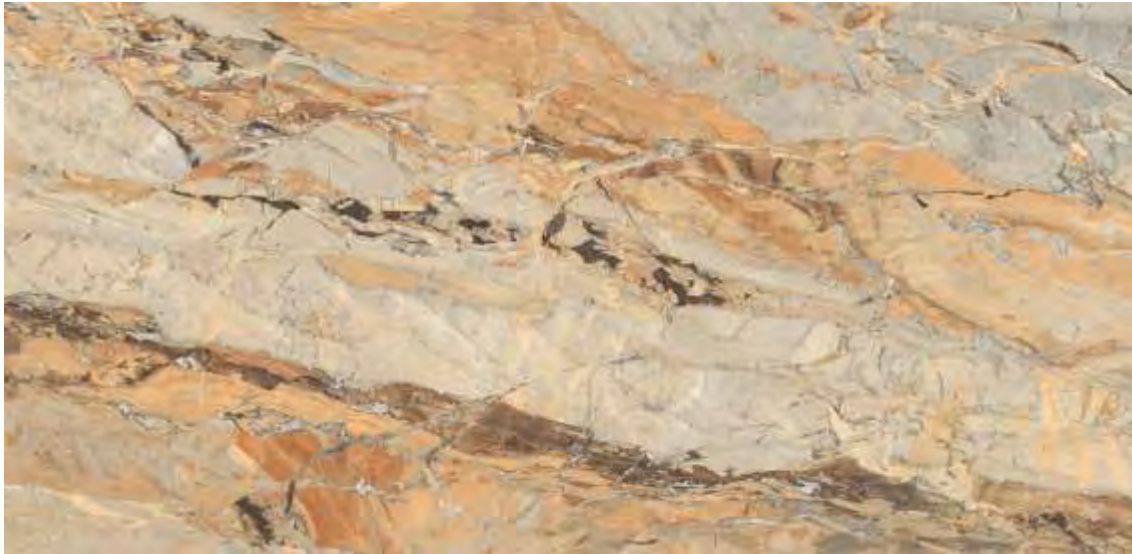


French Steel

Polished



Sarron Colin Fantistico



Sarron Colin Fantistico

Polished



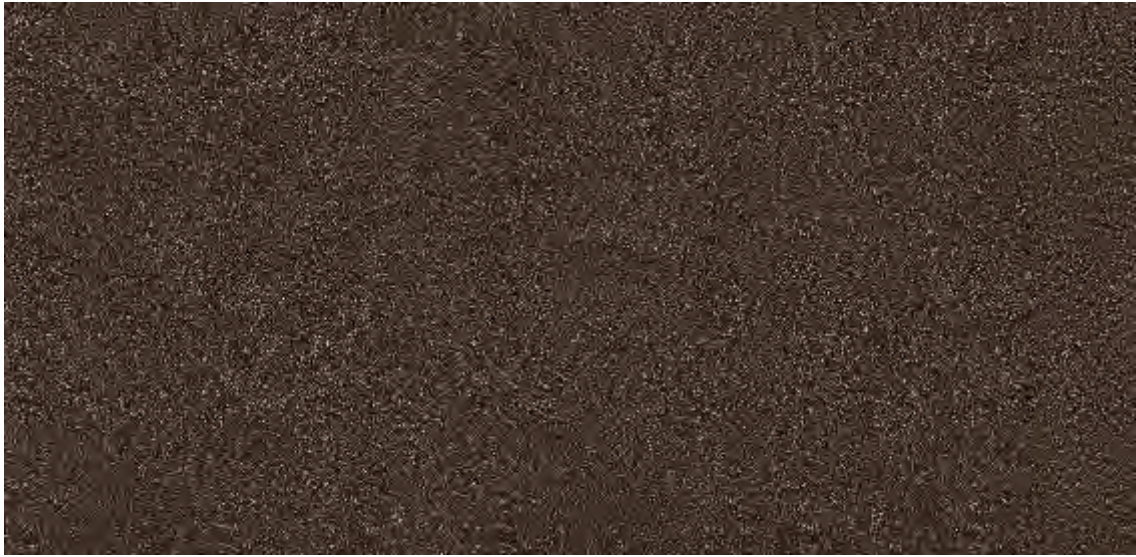


Black Grenito

Matt / Polished



Brown Grenito



Brown Grenito

Matt / Polished





Travertino Classico

Polished



Dyna Fantastico

Polished



Sahara Nero

Polished



Breccia Aurora



Breccia Aurora

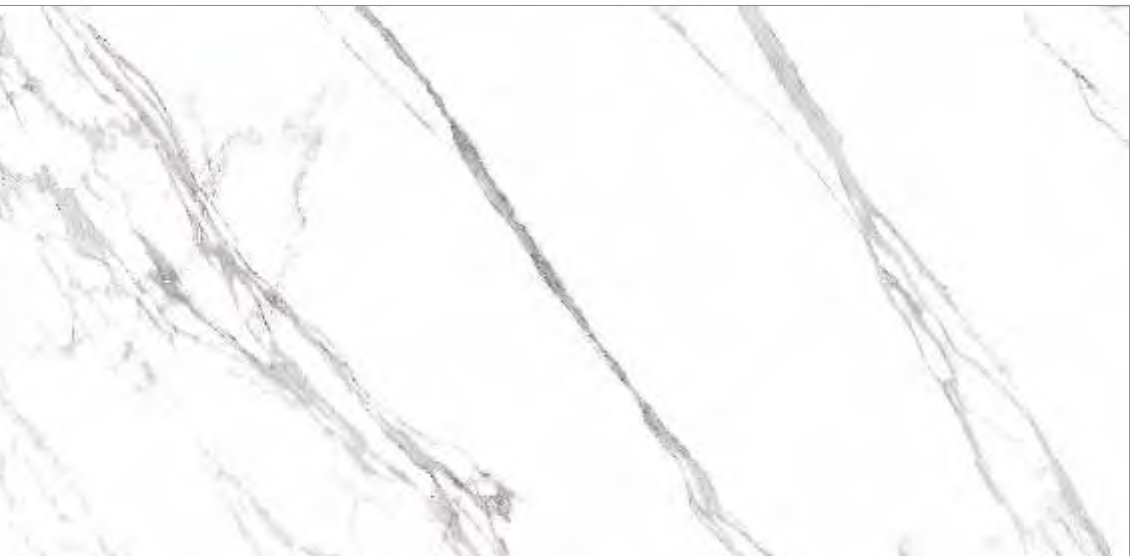
Polished





Marmi Bianco

Polished



Statuario Classic

Polished



Statuario Super

Polished



Statuario Pearl

Polished



Statuario Pearl





Azul Macauba

Polished



Armani Gold

Polished



Armani Grey

Polished



Armani Gold



Marfil

Polished





Portoro Silver

Polished



Portoro Gold

Polished



Portoro Silver



Estrada

Polished



Tobacco Brown

Polished





Lounge Ivory

Matt



Lounge Brown

Matt



Armani Bronze

Pearl



Nivea Grigio



Nivea Grigio

Pearl



Nivea Avorio

Pearl



CREATE MIGHTY  
IMPRESSIONS IN STYLE

800x2400mm





Armani Grey Polished



Armani Steel Polished



Armani Gold Polished



Titan Grey Polished



Marvel Polished



Dyna Polished



Dyna





Honey Onyx

Polished



Black Beauty

Polished



Onyx Natural

Polished



Onyx Bianco

Polished



Breccia Aurora

Polished



Travel

Polished



Black Beauty





Techno Beige

Polished



Techno Beige



Techno Choco



Techno Choco

Polished





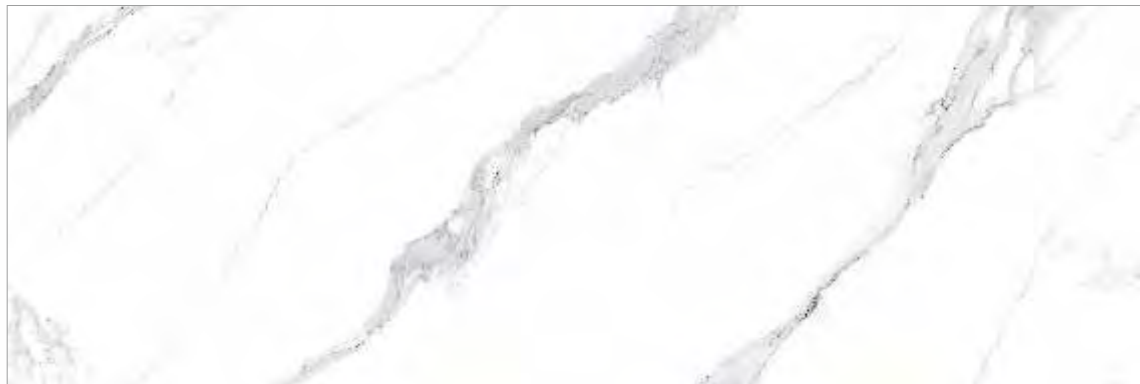
Statuario Fantastico

Polished



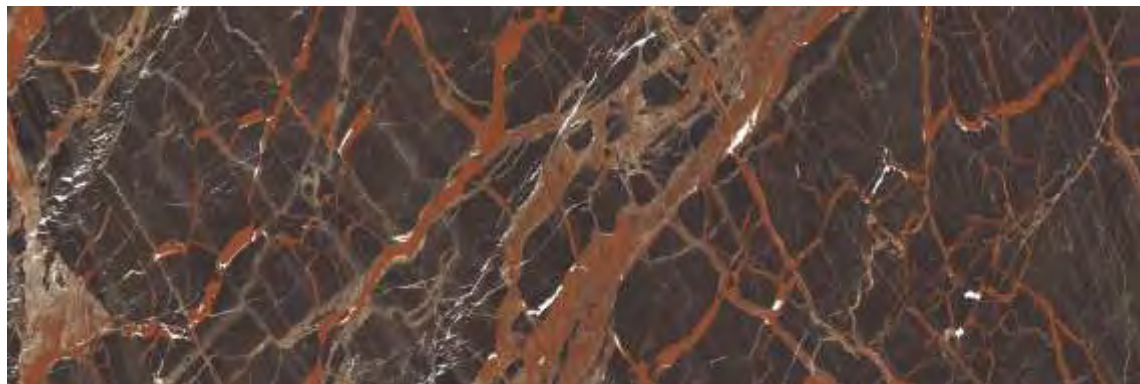
Statuario Ice

Polished



Mercury

Polished



Estrada

Polished



Travertine Pearl

Pearl



Travertine Pearl





Sata Royal

Sugar



Smoke Steel Sugar

Sugar



Smoke Grey Sugar

Sugar



Smoke Steel Sugar



Smoke Steel Rust



Smoke Grey Rust

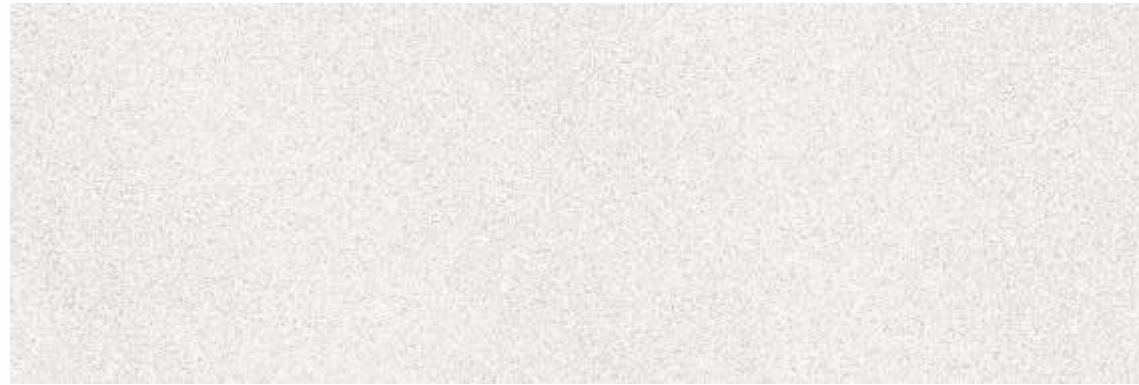
Matt



Smoke Steel Rust

Matt





Orient Bianco

Matt



Orient Nero

Matt



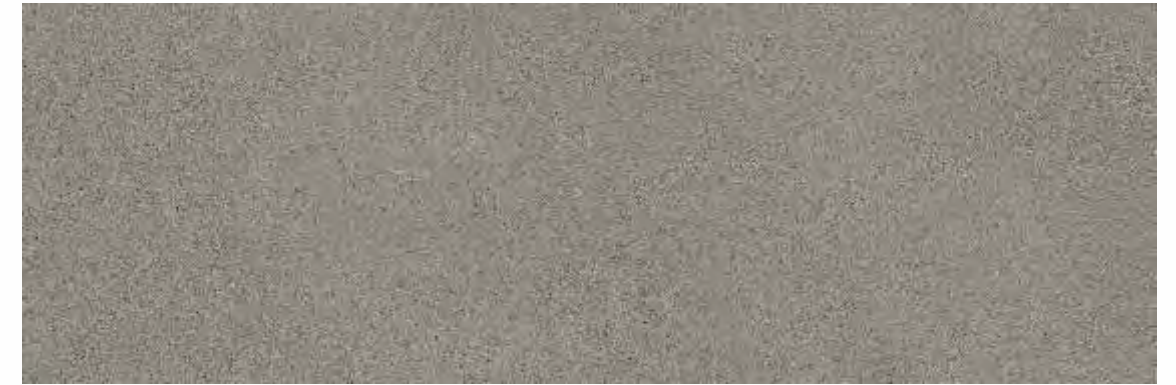
Orient Beige

Matt



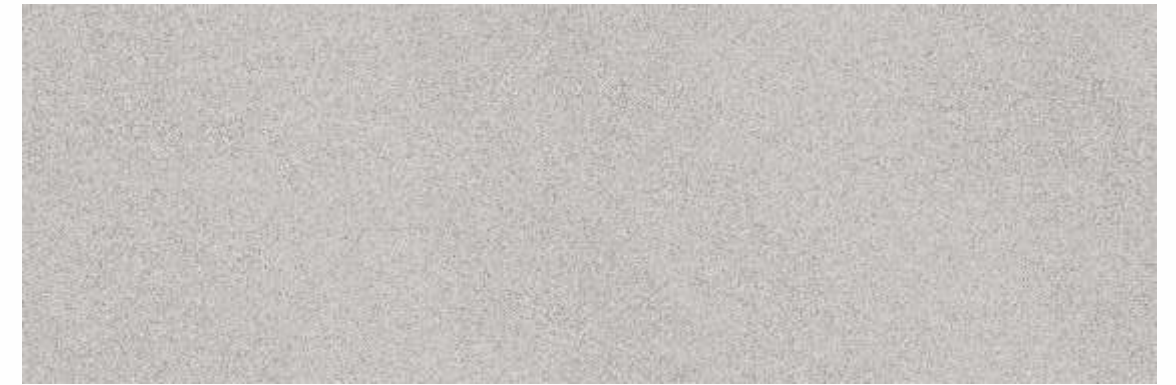
Orient Brown

Matt



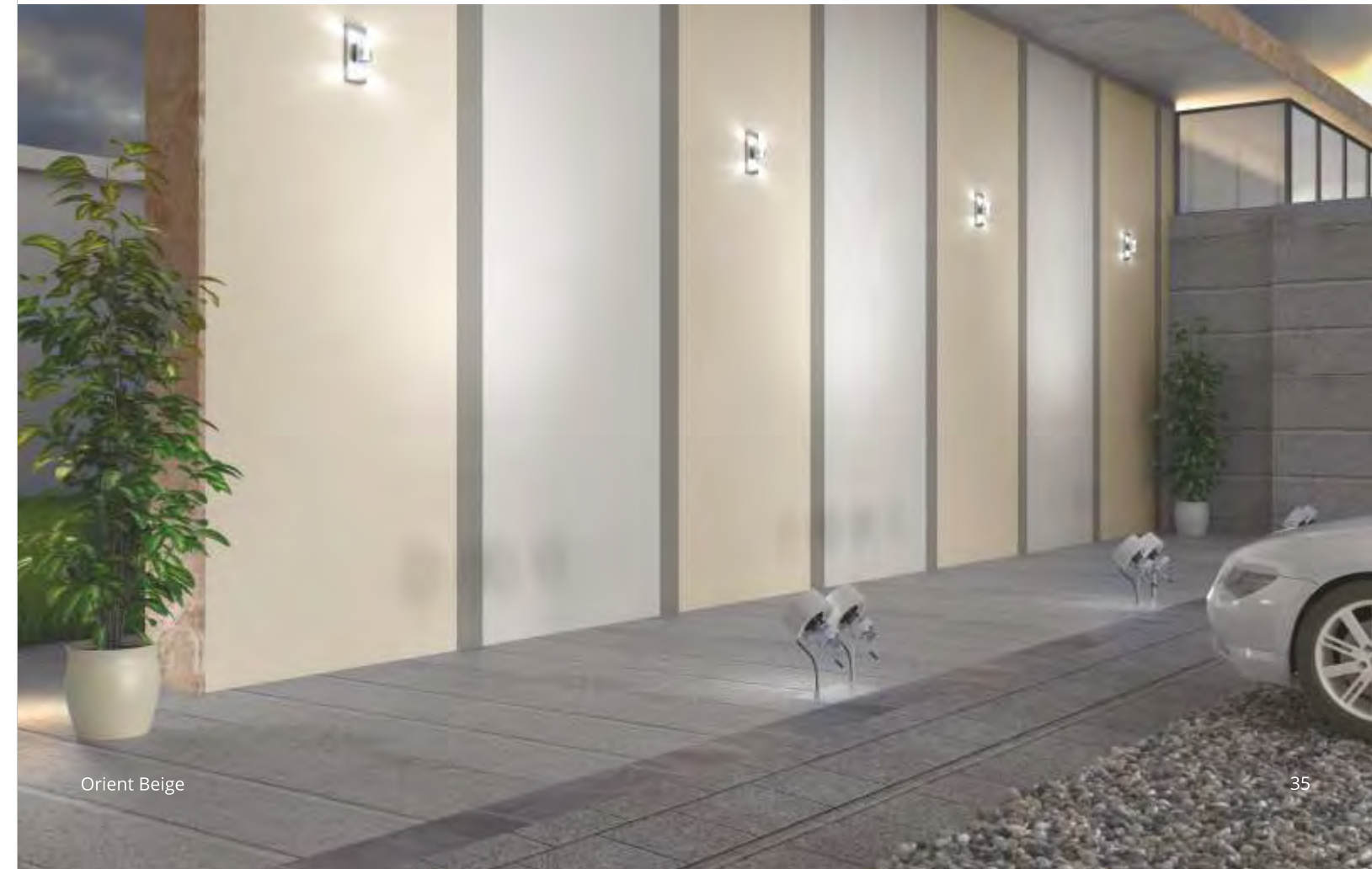
Orient Smoke

Matt



Orient Grey Light

Matt



Orient Beige





Portland Grey

Matt



Portland Mocha

Matt



Leminum Beige



Portland Grey



Leminum Beige

Matt



Leminum Red

Matt





Motely Wood

Matt



Motely Wood



Bricola



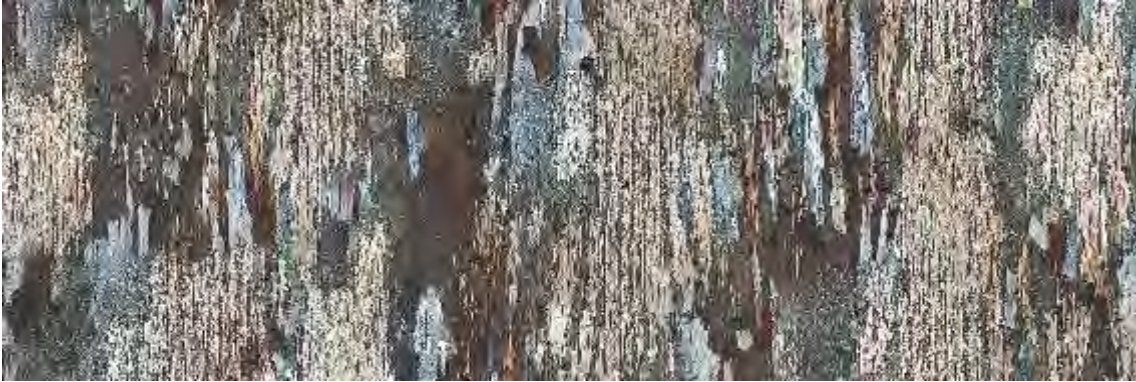
Bricola

Matt



Walnut Natural

Matt



Quirky Cobalt

Matt





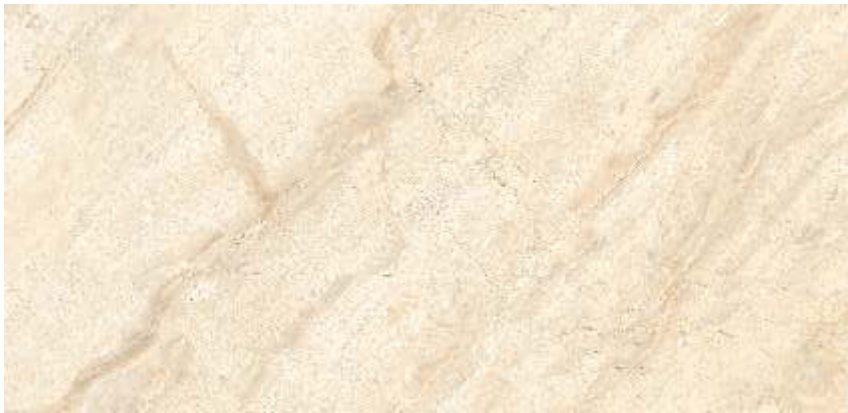
Invest in **surfaces** that do  
not allow **water** to penetrate

800x1600mm





Mercury Polished



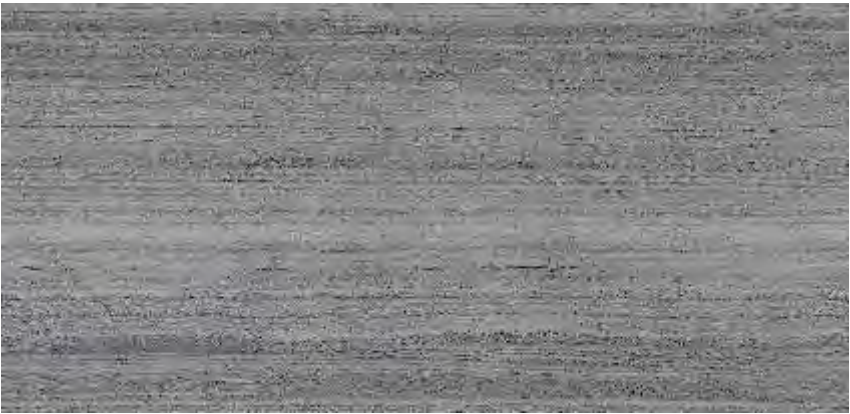
Dyna Polished



Rain Forest Polished



Marvel Polished



Titan Grey Polished



Travel Polished







Breccia Aurora Polished



Bottichino Glossy Polished



Classic Onyx Polished



Dyna Fantastico Polished



Statuario Polished

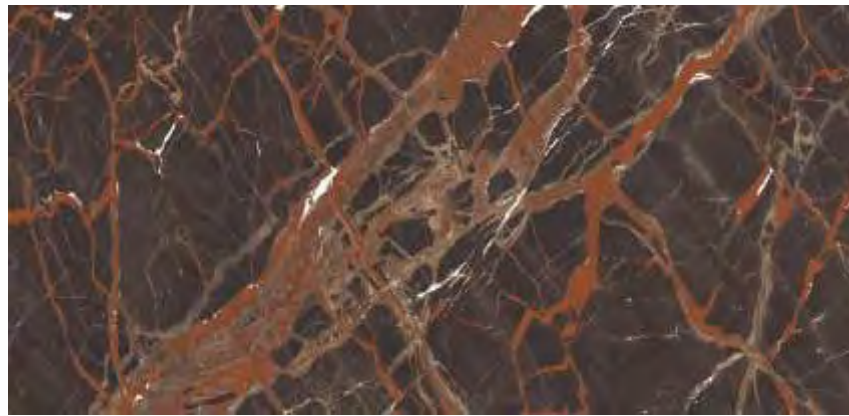


Lilac Polished



Lilac





Estrada

Polished



Marfil

Polished



Travertino Classico

Polished



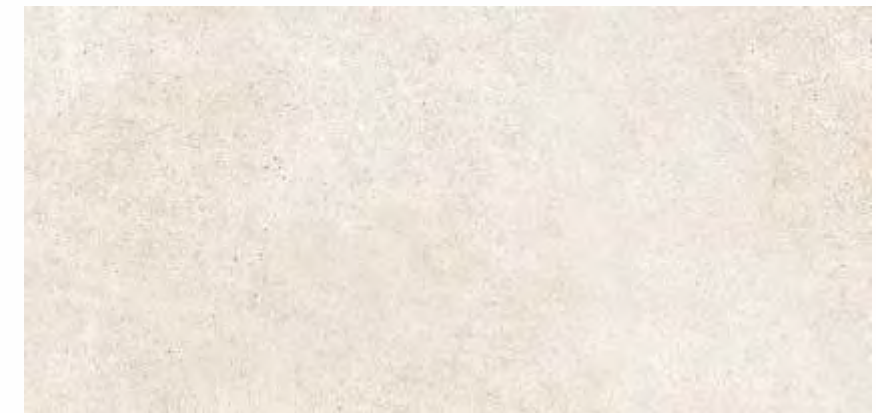
Onyx Bianco

Polished



Esha Grey

Polished



Esha Crema

Polished



Esha Grey





Onyx Natural

Polished



Travertine Pearl

Pearl



Amazon Beige

Pearl



Onyx Natural

49



Amazon Beige

48





Monty Slate Matt



Monty Grigio Matt



Smoke Grey Rust Matt



Smoke Steel Rust Matt



Inco Metal Matt



Acero Beige Matt







**The Sun's harmful UV Rays  
do not affect the vibrant  
appearance of the iMarble slabs.**

800x1200mm





Black River Polished



Apollo Beige Polished



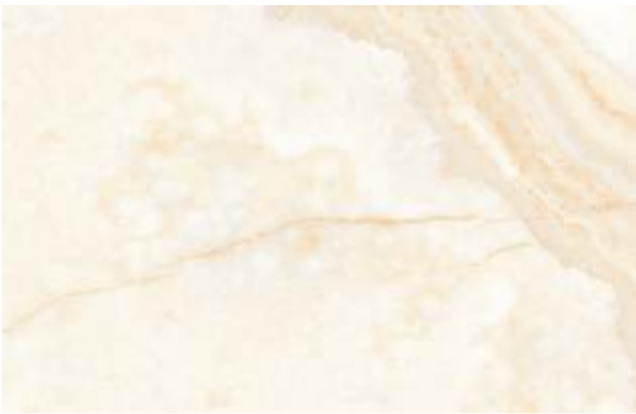
Botto Neo Polished



Deo Beige Polished



Cree Beige Polished



Feather Polished



Tamptation Brown Polished



Tamptation Grey Polished



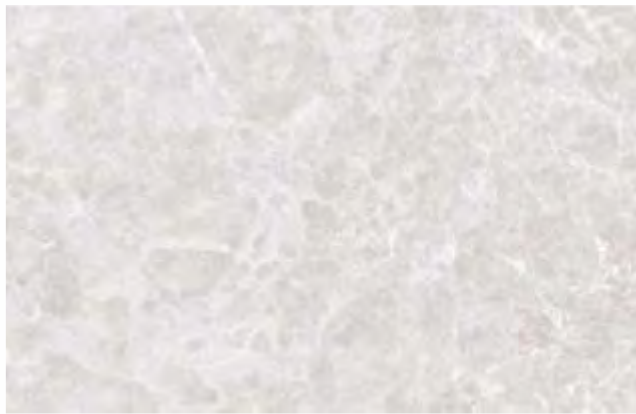
Marco Beige Polished



Sound Crema Polished



Wilson Crema Polished



Wilson Grey Polished



Wilson grey

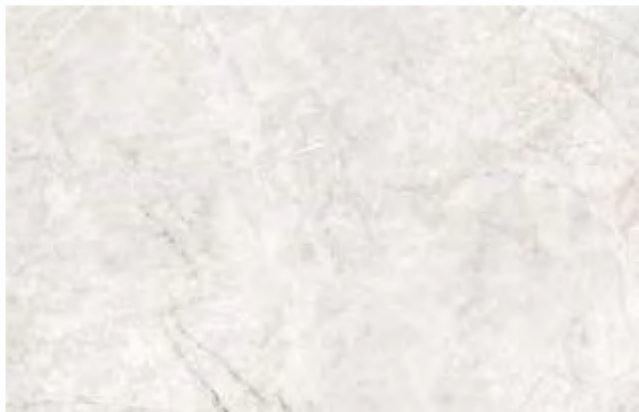




Santafe Bianco Polished



Summer White Polished



Vector Grey Polished



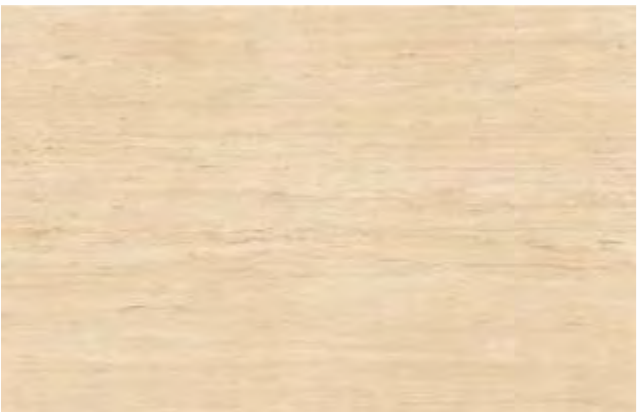
Titan Gris Polished



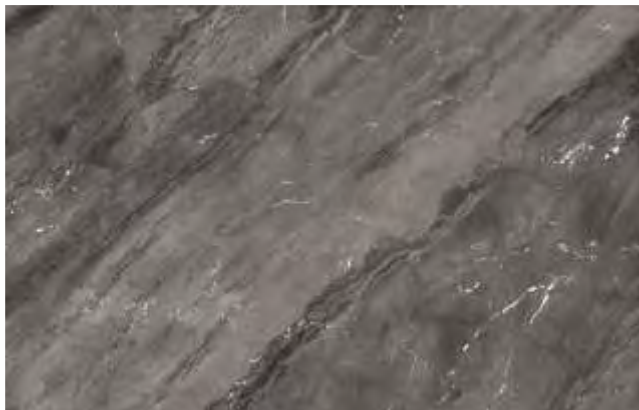
Titan Beige Polished



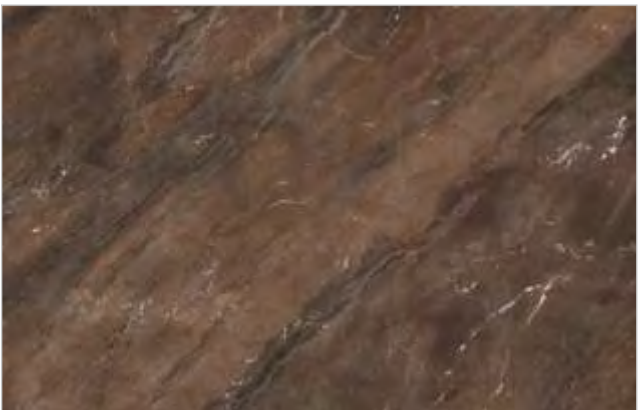
Trivago Polished



Travolta Polished



Taco Charcoal Polished



Taco Bruno Polished



Creta Neo Polished



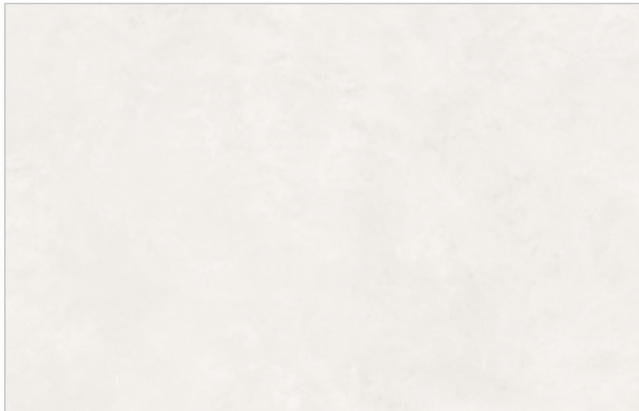
Legna Brown Polished



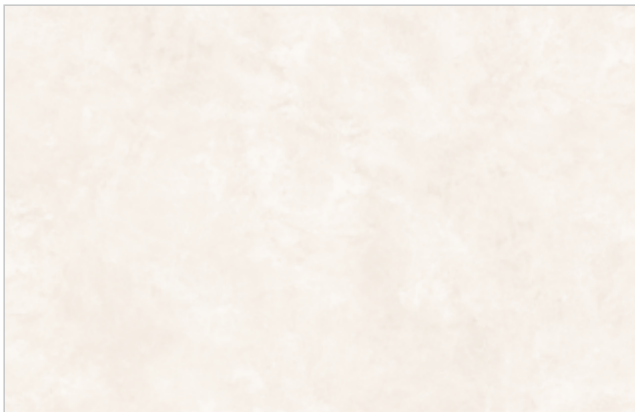




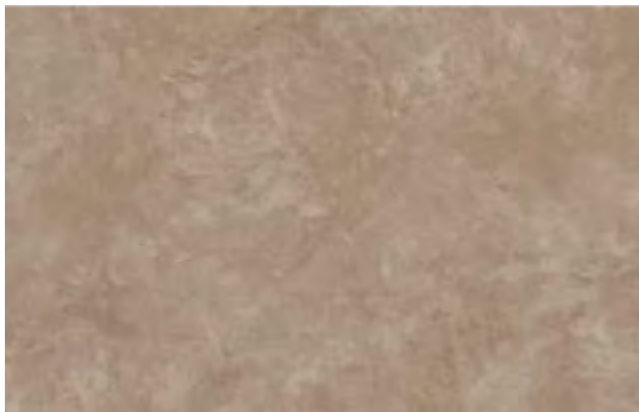
Cementis Ash Matt



Cementis Bianco Matt



Cementis Crema Matt



Cementis Bruno Matt



Cementis Mocha Matt



Cementis Bruno

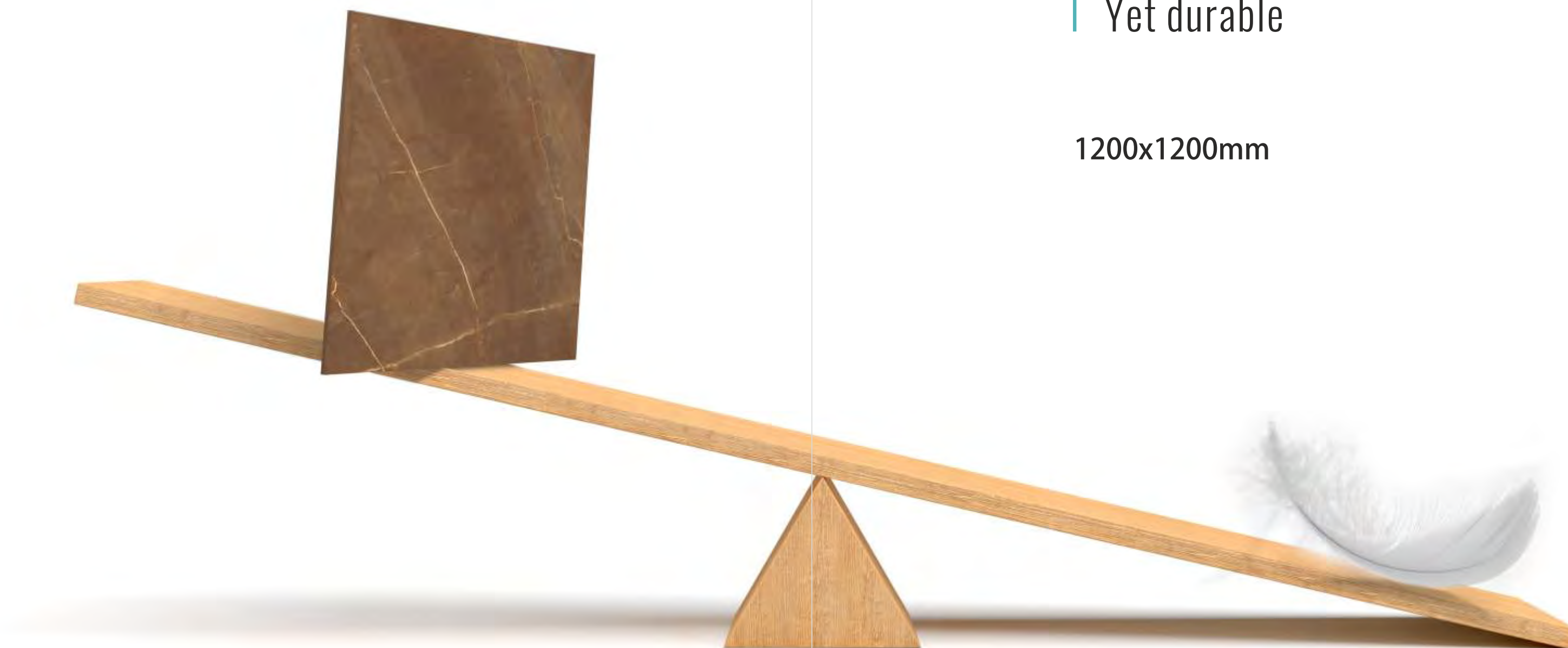


Cementis Ash



An exclusive  
Surface option that  
Is **lightweight**  
Yet durable

1200x1200mm







Opera Brown Polished



Sarron Colin Fantastico Polished



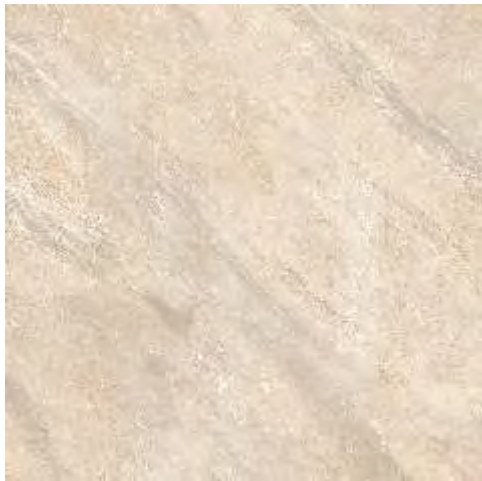
French Gris Polished



French Steel Polished



Marvel Polished



Italia Beige Polished







Armani Gold

Polished



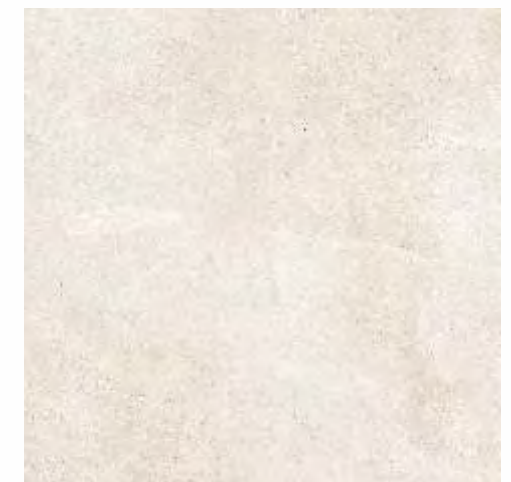
Rosso Crema

Polished



Esha Grey

Polished



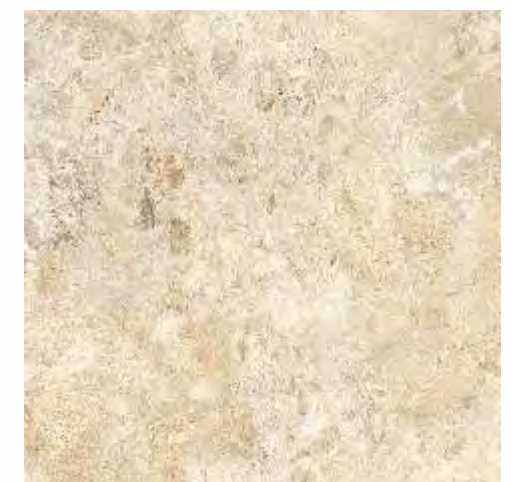
Esha Crema

Polished



Dyna Fantastico

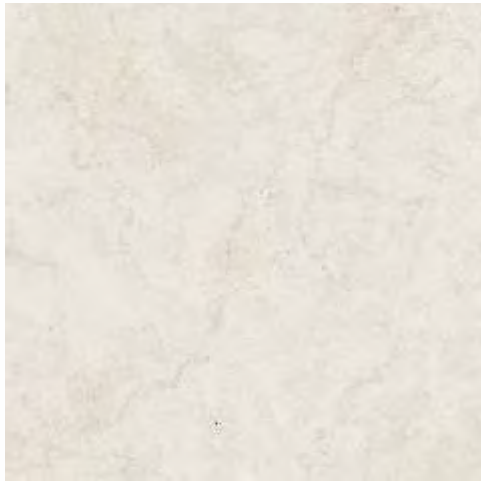
Polished



Breccia Aurora

Polished





Marfil Polished



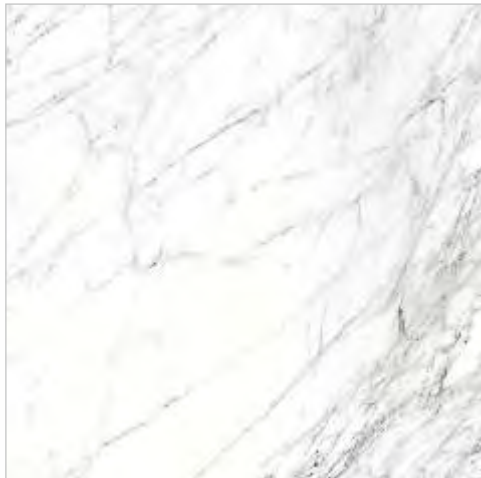
Emperador Light Polished



Statuario Classic Polished



Statuario Gold Polished



Opel Bianco Polished



Titanium Black Polished



Brown Grenito Matt / Polished

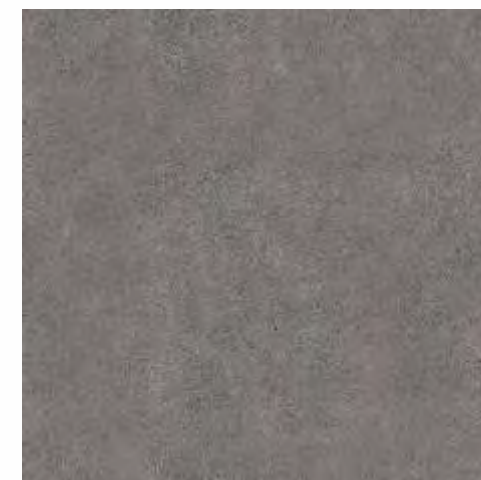


Black Grenito Matt / Polished



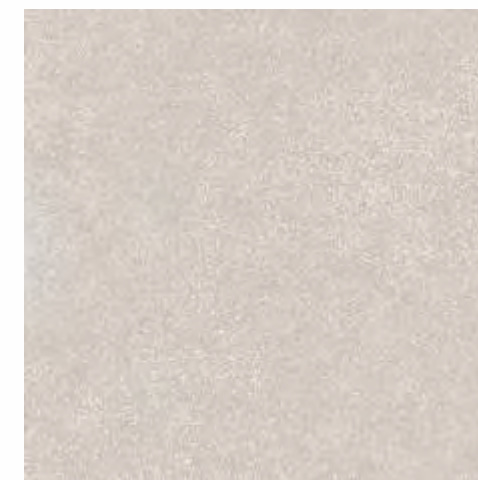
Black Grenito





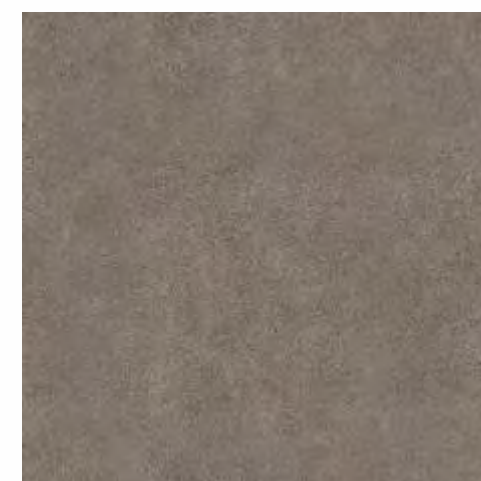
Plasto Gris

Matt



Plasto Beige

Matt



Plasto Brown

Matt



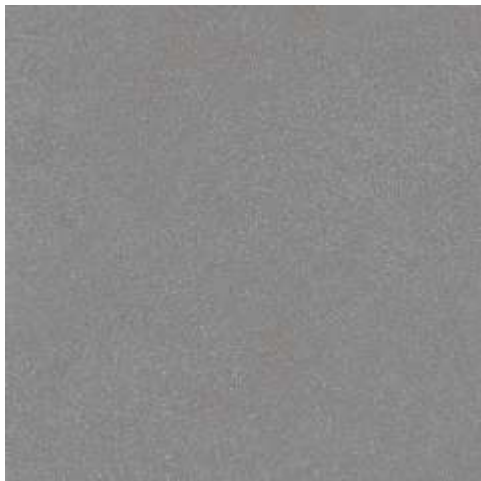




Pietra Bianco Matt



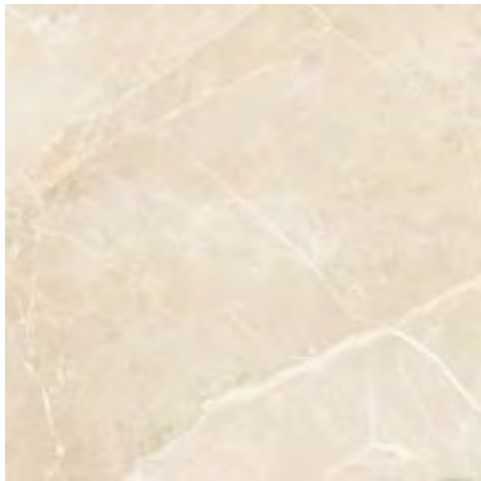
Pietra Beige Matt



Pietra Grey Matt



Oxido Blue Matt



Nivea Avorio Pearl



Nivea Grigio Pearl

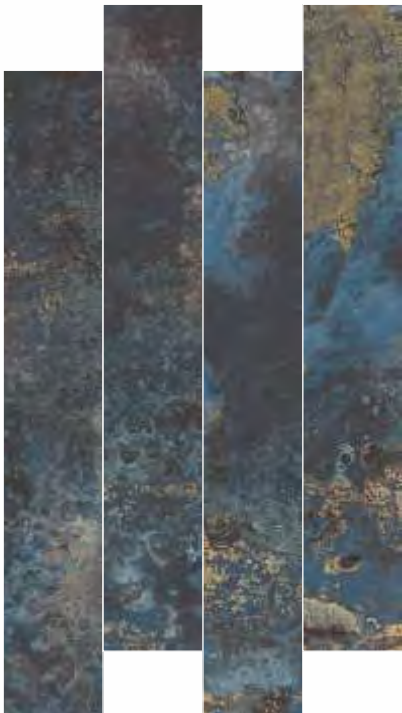






Acero Beige

Matt Wood



Oxido Blue

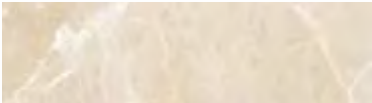
Metallic Matt



Finishes



**POLISHED**  
Use of special transparent glaze on the surface, gives a polished look to the tiles. The polished surface reflects high-end grace and potency.



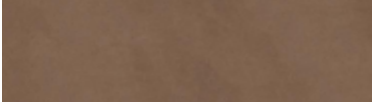
**PEARL**  
Pearl finish stands for detailed natural veining and subtle poise that it derives through modern technology.



**MATT WOOD**  
It is a perfect mélange of matt and wooden finish. Surface treatment gives it a perfect look and also makes it highly scratch resistant.



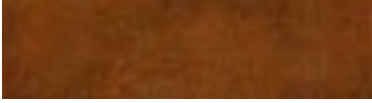
**MATALLIC**  
Pure rusted metals are reproduced with special inks giving the realistic effect.



**MATT**  
Top grade matt finish is derived using state of the art technology which provides high resistance to fading and discoloration to tiles.



**SUGAR**  
Application of the sugar like granules on the surface imparts a distinctive texture shine and coarse surface design.



**LEATHER**  
Detailed surface contour and, refined surface polish for this finish is derived using punch effect and special granules

Thickness

INDICATIVE USAGE AREA	6mm & 9mm	12mm
Indoor paneling	●	
Indoor paving	●	
Outdoor natural stone facade	●	●
Outdoor paving	●	
Ventilated facade with exposed anchor	●	●
Ventilated facade with hidden anchor	●	●
Countertops		●
High-traffic paving	●	●
Indoor paneling over the material	●	
Indoor paving over the material	●	
Furniture	●	●

The above data is indicative



## 1. iMarble Slab Installation

There are 5 primary steps of tile laying

- 1) Surface Preparation
- 2) Dry Laying
- 3) Tile Laying
- 4) Grouting
- 5) Initial Cleaning

### 1.1. Surface Preparation

Plaster the surface of the floor/wall to be tiled smooth and complete the plastering and curing at least two weeks prior to tiling.

The surface on which the tiles are to be laid should be clean and free from dirt and particles to avoid contamination. Before laying floor tiles on old mosaic and cement floors, the floor should be clipped with a chisel or sharp tool so that the surface is sufficiently mail to grasp the mortar.

Qutone recommends use of adhesive of class C3E according to En12004 and SI according to EN12002 standards.

Deviations are more significant among different thicknesses of iMarble, given the way in which each thickness is produced. Before cutting, inspect the slabs to ensure the tone of the different slabs is satisfactory. Make sure you do this inspection under lighting conditions that are similar to the area of installation. We recommend that you don't blend slabs from different batches.

### 1.2. Dry Laying

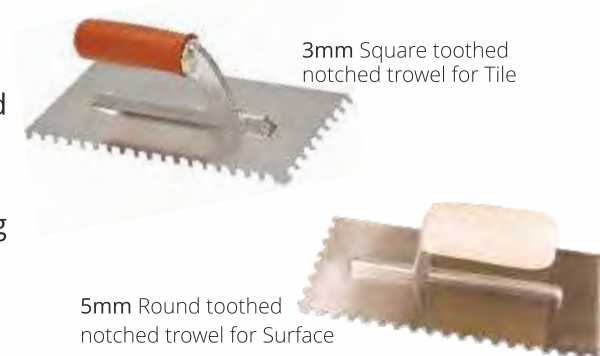
Tiling should preferably be started from the center area so that cut tiles, if any, come only on the sides. Arrange tiles in the desired layout to ensuring that there are equal cut tiles at either end. Proper gradient of floor should be provided for ease in drainage & ensuring avoidance of water accumulation. Qutone recommends laying of tiles with adhesive. Proper care should be taken in terms of selection of adhesive with the area intended for usage. Various adhesive for varied application are available in the market. Proper market consultation with adhesive supplier is recommended. Follow the instruction of tile adhesive manufacturer for laying the tiles.



### 1.3. Tile Laying

Take care of the following things before fixing the tiles

- Entry and Exit points should have doormats in order to avoid abrasive dust particles from entering the floor area
- Avoid movement on damp surface
- Avoid pulling heavy, pointed or sharp objects on the flooring surface



### 1.3.1. In-door Installation

Make sure to leave 2-3 mm space between the tiles. Create movement joints every 25 mtr or as directed by an expert. The adhesive must be applied to the back of the tile and the sub-layer with a notched trowel.

### 1.3.2. Outdoor Installation

Try to keep movement joints of approximately 1 cm wide at the corners. Create movement joints every 9-12 mtr or as directed by an expert. Always respect the building's structural joints while laying the tiles.

It is mandatory that the tiles be installed with a large joint between each of them. The width of the joint must be calculated based on the local climate conditions, the tile size and flexibility of the sub-layer.

### 1.3.3. Tile over Tile Installation

Ensure that the old tiles are fixed properly. If not, remove any unsecured tiles and fill the gaps with a suitable mortar. Before laying iMarble, wash the old tiling with water and soap to get rid of any dust, grease or other impurities and let it dry. Apply bonding resin before tiling over the old tiles. After this step, follow the instructions for indoor or outdoor installation. For fixing the Tiles on wall dado we recommend the use of adhesive please follow the manufacturer's instructions for the same. We do not recommend the use of sand and cement for fixing on dado. Mark and lay the tiles from the center of the area to be tiled so that cut tiles, if any will be on the outer edge towards the wall. It is advisable to maintain a gap of 1 mm to 2mm between adjoining tiles to allow for possible expansion as per BIS/EN tolerance norms.

For fixing the Tiles on wall dado we recommend the use of adhesive. Please follow the manufacturer's instructions for the same. We do not recommend the use of sand and cement for fixing on dado. Mark and lay the tiles from the center of the area to be tiled so that cut tiles, if any will be on the outer edge towards the wall. It is advisable to maintain a gap of 1 mm to 2mm between adjoining tiles to allow for possible expansion as per BIS/EN tolerance norms.

### 1.4. Grouting

Leave a joint gap of about 3-4 mm between two tiles. The gaps between tiles should be filled with grout available in the market. Always follow the instructions of grout manufacturer. After filling the joints, floor surface should be cleaned with sponge or a piece of cloth and filler should be allowed to set for 24 hours by avoiding all traffic there on. Before fixing tiles, lay them out in desired pattern and acceptable blend of color. \*Variation in size, colour and design are inherent property of tile.

**\*\*DO NOT USE IRON HAMMER OR ANY HEAVY OBJECT TO PRESS THE TILES**

### 1.5. Initial Cleaning

The initial cleaning done immediately after the tiling process is complete is of essential importance for removing all mortar, adhesives and epoxy residues that may be left in the joints. We recommend use of an acid decalcifying product. Rub energetically to obtain the maximum cleaning. After washing the floor, which is just as important, rinse thoroughly with plenty of water to remove all traces of the detergent used. This process should be carried out as early as the grout is cured. Refer to the adhesive and grout manufacturers' instructions carefully.



General Recommendations:

For commercial and heavily used surface areas such as airports, hospitals, supermarkets, and any public spaces with heavy foot traffic which are thus subject to considerable soiling, it is necessary to use automatic cleaning machines with suction of the washing liquids.

This allows not only deep cleaning, but also the continuous removal of liquids containing substances that cause soiling, thus preventing the formation of films which are very difficult to remove.

Any detergent on the market can be used in the desired concentration for cleaning the high technology products, with the exception of HYDROFLUORIC acid (HF) or its compounds, according to UNI-EN 176 standards. In order to keep costs limited and speed up maintenance operations, the concentration of the detergent must always be as low as possible. For raised floors we suggest to choose bright or polished surfaces in large sizes: these materials can be dry cleaned or with the minimum use of liquids.

After the floor is laid it is necessary to make a very accurate initial cleaning with proper products.

Detergents:

The detergents are essential when laying new materials on old floors and for preparing the support surface perfectly as well as after installation to remove all traces of cement, adhesive or sealant from the newly laid materials.

Matt Materials:

For these materials, after completing the steps described in the section “Initial Cleaning”, you only need to clean the floor with hot water containing small quantities of an alkaline detergent. On these types of surface it is not advisable to apply waterproofing product: the absence of porosity causes the waterproofing agent to deposit on the surface in an uneven way and to have unpleasant aesthetic effects.

Relief Materials:

The procedure described for matt and bright materials is also valid for products with relief surface with the following additions:

- When cleaning, follow the outline of the relief pattern;
- rub aggressively using appropriate bristles;
- rinse abundantly and thoroughly.

**Note:** Colors shown are as accurate as the limitations of the printing process will allow. Prospective customers are advised to inspect a sample of the tile before ordering. Every effort has been made to ensure the accuracy of the information given. However, the company reserves the right to change the specifications without any notice. Something variations in shade or size being inherent to ceramic industry may occur. Before fixing, we advice you to follow the fixing instructions on the cartons of the tiles as no responsibility can be accepted by the company once the tiles have been fixed.

Technical Specification

CHARACTERISTIC	STANDARD AS PER ISO-13006/ En14411 GROUP	IMARBLE VALUE	TEST METHOD
Regulatory Properties			
Deviation in Length & Width	±0.5%	±0.2%	ISO - 10545-2
Deviation in Thickness	±0.5%	±0.5%	ISO - 10545-2
Straightness of Sides	±0.5%	±0.2%	ISO - 10545-2
Rectangularity	±0.5%	±0.2%	ISO - 10545-2
Surface Flatness	±0.5%	±0.2%	ISO - 10545-2
Colour Difference	Unaltered	No Change	ISO - 10545-16
Glossiness	As per Mfg.	>90%	Glossmeter
Structural Properties			
Water Absorption	≤0.05	≤0.05	ISO - 10545-3
Apparent Density	>2.00 g/cc	>2.10 g/cc	DIN 51082
Massive Mechanical Properties			
Modulus of Rupture	Min 35N/mm <sup>2</sup>	Min 40N/mm <sup>2</sup>	ISO - 10545-4
Breaking Strength	Min. 1300 N	Min. 2000 N	ISO - 10545-4
Impact Resistance	As per Mfg.	Min. 0.55	ISO - 10545-5
Surface Mechanical Properties			
Surface Abrasion Resistance	As per Mfg.	Min. class 3	ISO - 10545-7
Moh's Hardness	As per Mfg.	Min. class 4	EN 101
Thermo Hygrometric Properties			
Frost Resistance	No Damage	No Damage	ISO - 10545-12
Thermal Shock Resistance	No Damage	No Damage	ISO - 10545-09
Moisture Expansion	Nil	Nil	ISO - 10545-10
Thermal Expansion	Max. 9.0 x 10 <sup>-6</sup>	Max. 6.5 x 10 <sup>-6</sup>	ISO - 10545-08
Crazing Resistance	As per Mfg.	Min. 10 Cycle	ISO - 10545-11
Chemical Properties			
Chemical Resistance	No Damage	No Damage	ISO - 10545-13
Stain Resistance	Resistant	Resistant	ISO - 10545-14
Safety Properties			
Slip Resistance	As per Mfg.	>0.40	ISO - 10545-17
Fire Resistance	As per Mfg.	Fire Proof	N.A.

Packing Details

DIMENSION ( mm )	SLAB	SQUARE METRE	SQUARE FEET
1200 x 2400mm	1	2.88	31.00
800 x 2400mm	2	3.84	41.33
800 x 2400mm (12mm)	1	1.92	20.67
800 x 1600mm	2	2.56	27.55
800 x 1200mm	2	1.92	20.67
1200 x 1200mm	2	2.88	31.00
195 x 1600mm	4	1.25	13.43
195 x 1200mm	6	1.40	15.11